



# TamlynWrap®

## RainScreen 6.3

## INSTALLATION GUIDE

[www.tamlynwrap.com](http://www.tamlynwrap.com)

### STEP 1: Rough Opening

Install the Top Vent (VST) for rainscreen at the top, combined with Vent Strip (VSZ) at the bottom of the sheathing.



### STEP 2: Sill Tape

Apply 6" wide XtremeFlashing™ Tape over a sloped sill. Use J Roller or squeegee to apply pressure to pressure sensitive flashing tape.



### STEP 3: Corner Tape at Sill

Flash both corners with Bow-tie or stretched tape.



### STEP 4: Additional Sill Tape

Lap additional 6" wide XtremeFlashing™ over the sill and corners.



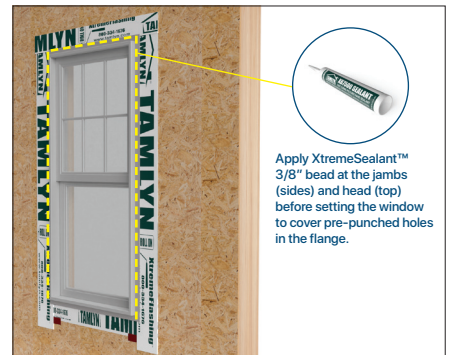
### STEP 5: Jamb and Head Tape

Adhere vertical sections of 9" XtremeFlashing™ over the jamb (side) that should overlap the flashing at the sill (bottom) and extend approximately 3" above the rough opening at the head (top). Apply XtremeFlashing™ Tape at the top to cover the rough opening. Turn or layer flashing into the jamb the depth of the window jamb.



### STEP 6: Install Window

Set the window into the rough opening, plumb, level, square, and fasten to the structure **per window manufacturer's recommendation**. XtremeFlashing™ should be visible and behind the sill flange. **Do not apply XtremeFlashing™ over the bottom flange.**



### STEP 7: Jamb Tape on Flange

Lap additional 6" wide XtremeFlashing™ over the jamb flange on both sides. Use J Roller or squeegee to apply pressure to pressure sensitive flashing tape.



### STEP 8: Drip Edge Detail

Install XtremeTrim® Window Flashing above the window head (top). Drip cap should be back bedded to sealed.



### STEP 9: Drip Edge Tape Detail

Adhere XtremeFlashing™ and overlap the XtremeTrim® Window Flashing. Head (top) section must extend beyond jamb flashing 2" both sides.





# TamlynWrap® RainScreen 6.3

## INSTALLATION GUIDE

[www.tamlynwrap.com](http://www.tamlynwrap.com)

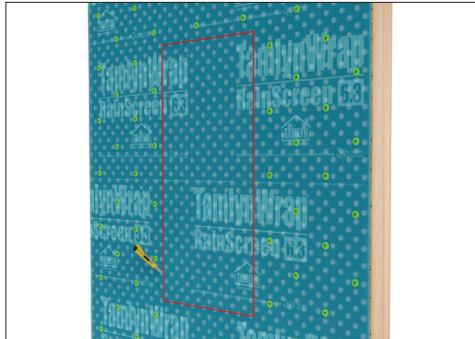
### STEP 10: Double Side Tape at Window Sill, Jambs, Window Head

Adhere vertical sections of XtremeSeam™ Double Sided Tape over the jambs and head. Do not peel off the liner until the TamlynWrap® Rainscreen is ready to be installed.



### STEP 11: Rainscreen Wrap Install

Cut the opening from the wrap around the window frame. Peel/remove the liner from the pre-installed XtremeSeam™ double sided tapes and adhere TamlynWrap® Rainscreen (6.3 or 10.1) on all sides with pressure. Cap-fasten TamlynWrap® Rainscreen (6.3 or 10.1) every 3 square feet all through the installed area with shingle lap fashion (i.e. begin installation at the base of the wall to fit the assembly).



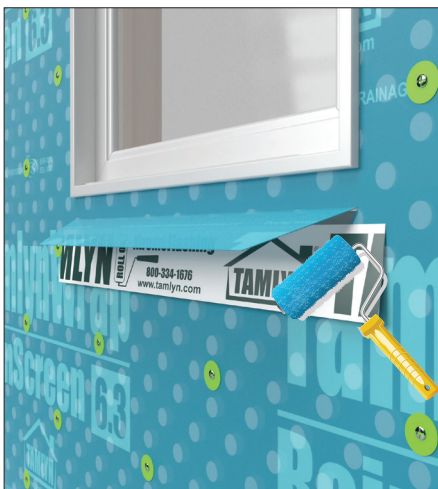
### STEP 12: Bottom Tab Opening

Cut 4" below the sill and provide (2) 45° degree angled cuts towards the horizontal cut and create a bottom tab.



### STEP 13: Tab Opening Flashing

Lap 6" XtremeFlashing over the TamlynWrap® Rainscreen and tape it right below the flange.



### STEP 14: Rainscreen Wrap Installation

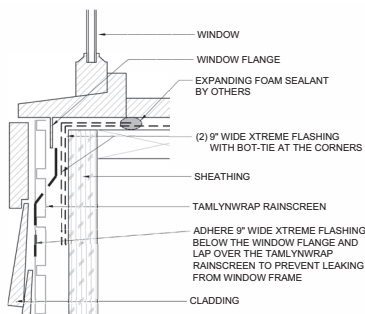
Tape the Tamlyn® Rainscreen back in place when done to ensure the bottom tab will not be damaged due to wind or any other unpredictable circumstances.



### Finished Product



### Tab Opening Flashing Detail:



### Notes:

- Lap Tamlyn® Rainscreen shingled fashion starting from the lowest point. This means that you start from the bottom of the wall and work your way up. Proper shingling is required to shed water and to prevent water from entering the wall system.
- Use commonly available **scissors/knife** to cut Tamlyn® Rainscreen. Do not cut the cavity spacers with scissors/knife.
- Apply any **generic expanding foam sealant** by the inside window frame perimeter for air barrier purpose.
- Cap Fasteners should provide a minimum **1/2"** penetration into the nail base and be spaced approximately **12 to 18** inches apart along the horizontal and vertical laps.
- Overlap all horizontal seams by at least 6", all vertical seams by at least 6" with double sided tape flashing.