

XSV**DESIGN FEATURES**

The best looking, most “framer-friendly”, easy to install, effective continuous soffit vent on the market. Unique double-leg channels hide edges of soffit material for a clean look and help prevent the vent from being pulled up into the subfascia. Complies with the International Residential Code requiring that ventilation be equal 50% exhaust / 50% intake (soffit) in all situations including continuous ridge vents. Aluminum will not burn and thus is an important element in fire resistant construction.

MATERIAL

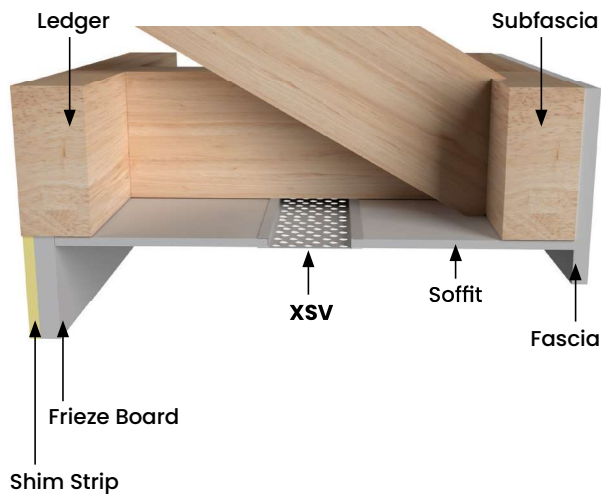
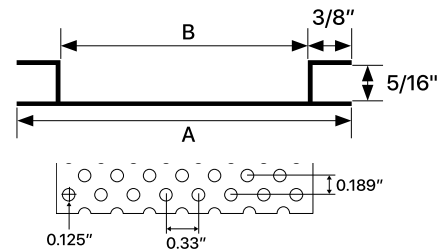
6063 T-5 .050" ± .005 extruded aluminum alloy with a proprietary coating that protects against harsh weather conditions and allows for paint adhesion.

FINISH

Available in mill finish or white. Also available in standard face only color match or full coverage Coastal Color Coating™ upon request.

NOTE

All parts are 8' Length standard unless otherwise indicated *NFA = net free area / sq.in.per linear ft.



ITEM ID	A	B	FINISH	NFA *
XSV51628	2-3/4"	2"	MILL	9
XSV51648	4-3/4"	4"	MILL	18.8
XSV51668	6-3/4"	6"	MILL	27.8