

DESIGN FEATURES

Through wall or soffit vents designed to last as long as the building. Made from premium quality stainless steel in a satin finish and includes stainless steel mounting screws. And available in galvanized steel that is mill finish, primed, or custom color matched for projects.

MATERIALS

304 Grade Satin Finish, Stainless Steel, Stainless Mounting Screws, Ember Proof Mesh, Sealing Gaskets.

26 Ga Galvanized Steel, Mounting Screws, Ember Proof Mesh, Sealing Gaskets.

Finish is Powder Coated 26 GA Galvanized Steel, Mounting Screws, Ember Proof Mesh, Sealing Gaskets.

INSTALLATION

Vents and Diffusers are supplied with mounting screws and mounting gasket for wood, cement siding, or other surfaces. In brick or masonry walls, it is necessary to pre-drill for the screws. If additional sealant required, use a superior quality exterior approved product. Inspect and remove any accumulated debris/lint at regular periods, but not less than twice a year.

NOTES

Special Order Options:

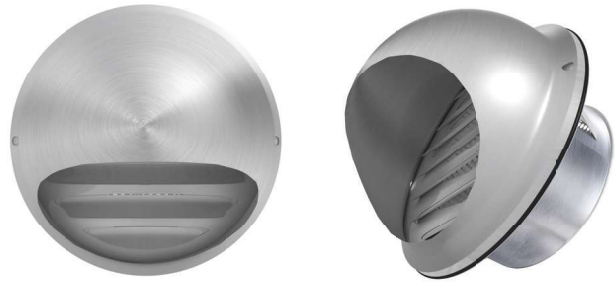
- 3" to 8" Duct Sizes
- Several 6" & 8" Duct Sizes in stock
- Dome Vents with Dryer Damper
- Hooded fresh air or open for utility lines
(call for details)

*NFA = net free area / sq.in. per lineal ft.

FINISH

Stocked in artic white, aged pewter, and dark bronze, Available in popular siding/soffit colors.

VDS / VDG Series (Dome Vent)



ITEM ID	PIPE SIZE	NFA*	MATERIAL
VDG4X2	4"	7.44	Galvanized
VDG6X2	6"	11.16	Galvanized
VDS4X2	4"	7.44	Stainless Steel
VDS6X2	6"	11.16	Stainless Steel

Specify vent type at the time of ordering -refer to page 229

VHS / VHG Series (Hooded Vent)



ITEM ID	PIPE SIZE	NFA*	MATERIAL
VHG4X2	4"	11	Galvanized
VHG6X2	6"	16.5	Galvanized
VHS4X2	4"	11	Stainless Steel
VHS6X2	6"	16.5	Stainless Steel

Specify vent type at the time of ordering -refer to page 229