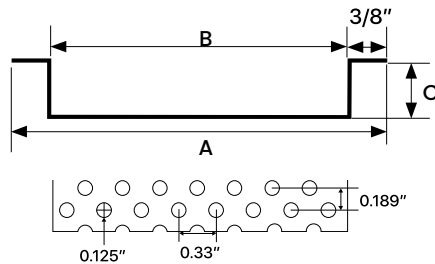
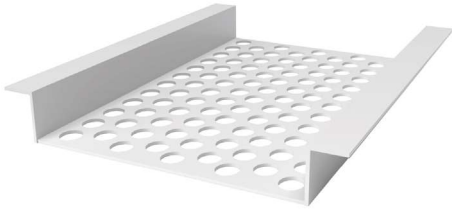


# CUV



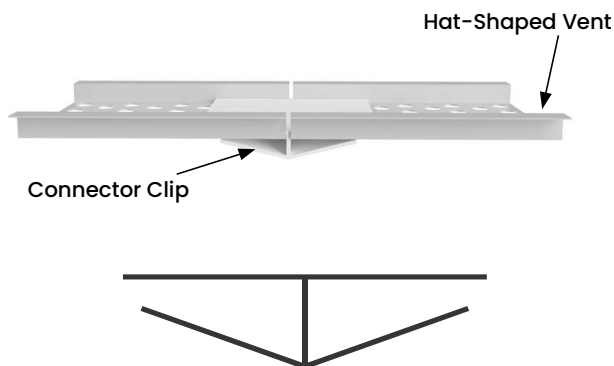
**HAT-SHAPED VENT**

ITEM ID	A	B	C	NFA*
CUV8V	2-7/8"	2-1/8"	3/8"	9
CUV8VW	3-3/4"	3"	3/8"	12.7
CUV8V4	5"	4-1/4"	3/8"	18.8

All parts are 8' Length standard unless otherwise indicated  
 \*NFA = net free area / sq.in.per linear ft.

**CONNECTOR CLIP**

ITEM ID	LENGTH
CONNCLIP	1-13/16"
CONNCLIP265	2-5/8"
CONNCLIP4	4"



## DESIGN FEATURES

Tamlyn vinyl hat-shaped vents are available in 2", 3" and 4" widths to handle nearly any soffit ventilation needs. Large perforated holes provide excellent intake airflow but inhibit pest entry. Use Connector Clip or Vinyl H Mold to join seams.

4" Hat Shaped Vent - 4" Hat Shaped Vent with 18.8 sq.in/foot air flow delivers almost 4x the air flow of the typical 5.0 sq.in vented soffit panel in less space while not allowing bees to enter.

## MATERIAL

Paintable white extruded rigid PVC, industry-standard, durable, chemically resistant product designed for outdoor weatherability.

