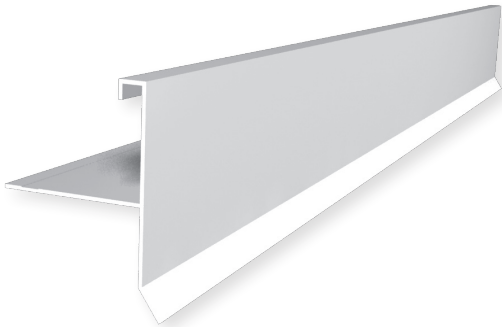


DESIGN FEATURES

Concrete T-Astragal Drip extrusions act as an integral concrete form; typical applications are the edge conditions of balconies and breezeways. The aluminum surface gives a quality aesthetic, the material is excellent against corrosion, and different finish options allow for design flexibility

MATERIAL

6063-T5 .055" ± .005 extruded aluminum alloy with proprietary coating that protects against harsh weather conditions and allows for paint adhesion. For all other finish options refer to page 18.



All measurements are nominal

ITEM ID	A	B
TBD3	3"	1-1/2"
TBD35	3-1/2"	2"

All parts are 10' Length unless otherwise indicated

