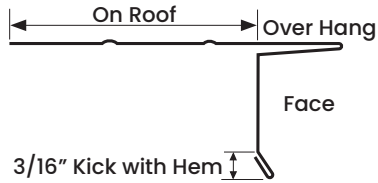
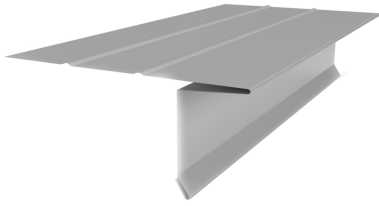


# DL



ITEM ID	FACE	ON ROOF	GIRTH
DL1545	1-1/2"	1-1/2"	6"
DL1560	1-1/2"	3"	6"

All parts are 10' Length standard. All dimensions are nominal.

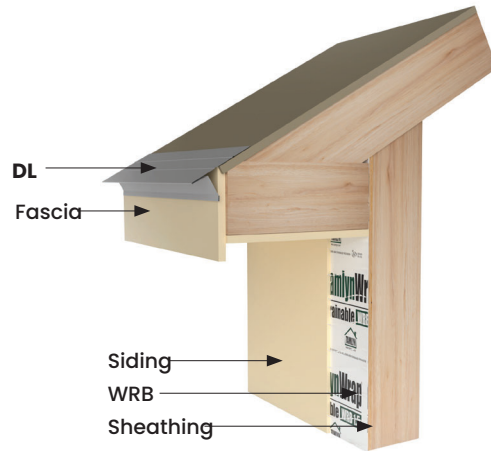
## DESIGN FEATURES

Deflects water away from fascia board. Overhang lip protects shingle edge at roof line.

## MATERIAL - STANDARD PROFILES

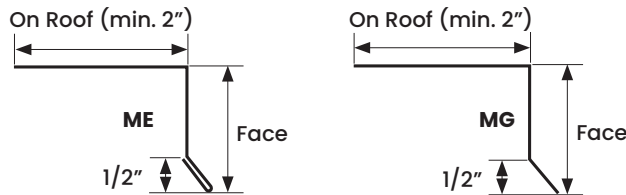
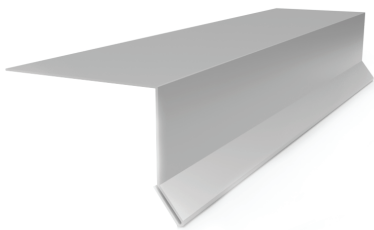
**Primed:** 26GA Galvanized steel with proprietary coating that protects against harsh weather conditions and allows for paint adhesion.

**STD Color:** .019 ± .003 Aluminum sheet coated 2 sides with paint system that is specifically formulated for exterior applications. Available in most popular Siding and Soffit colors.



## ANGLE ROOF EDGE

# ME/MG



ITEM ID	FACE	ON ROOF	GIRTH
ME360	3"	3"	6"
MG360	3"	3"	6"

Also available in 1" x 2" and 2" x 2"

All parts are 10' Length standard. All dimensions are nominal.

## DESIGN FEATURES

Deflects water away from fascia board. Basic roof edge profile.

## MATERIAL - STANDARD PROFILES

**Primed:** 26GA Galvanized steel with proprietary coating that protects against harsh weather conditions and allows for paint adhesion.

**STD Color:** .019 ± .003 Aluminum sheet coated 2 sides with paint system that is specifically formulated for exterior applications. Available in most popular Siding and Soffit colors.

