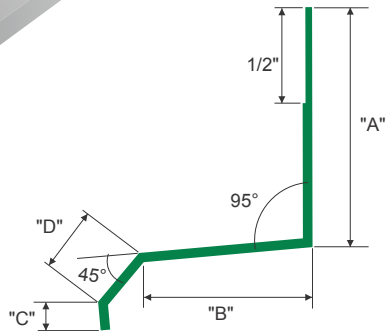
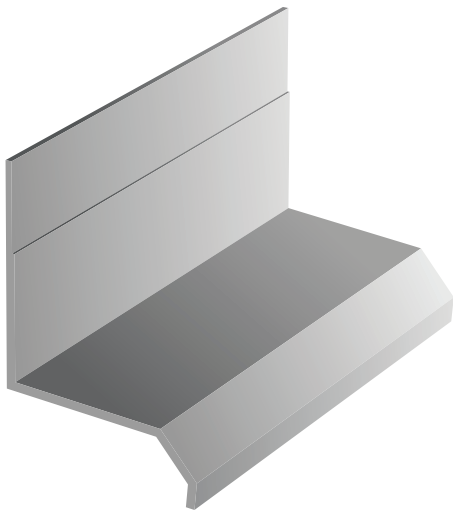
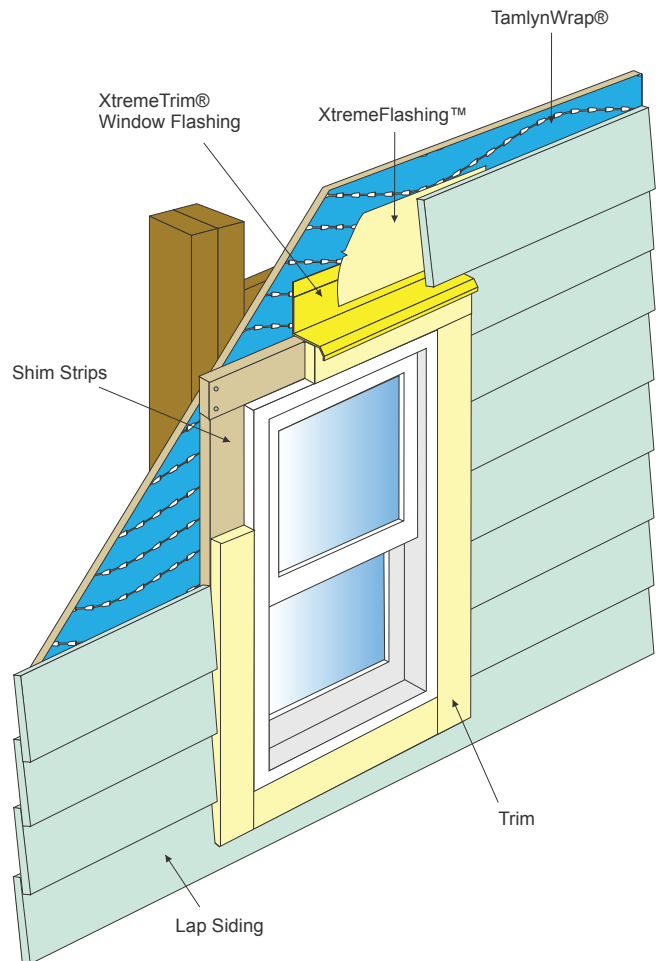
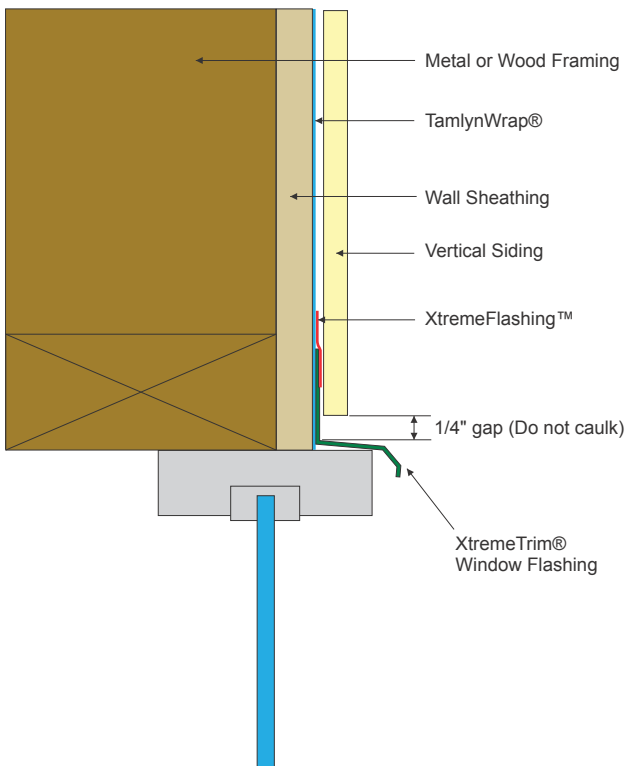


Window/Head Flashing



ITEM ID	"A"	"B"	"C"	"D"
XWF788	1-1/4"	7/8"	5/32"	5/16"
XWF1148	1-3/4"	1-1/4"	5/32"	5/16"
XWF1128	1-1/4"	1-1/2"	5/32"	5/16"
XWF158	1-1/4"	1-5/8"	5/32"	5/16"

All parts are 8' Length unless otherwise indicated



DESIGN FEATURES

Provides an easy to install and long-lasting method of minimizing water penetration. Used over window trim, band boards, panel intersections, and other vertical surfaces.

MATERIAL

6063-T5 .050" ± .005 extruded aluminum alloy with proprietary coating that protects against harsh weather conditions and allows for paint adhesion.

FINISH

Unless specified all XtremeTrim® items are provided in primed finish. Also available in popular siding/soffit colors in standard face only color match or full coverage CoastalColorCoating™. Clear Anodized is stocked and custom anodized is available (minimums apply).

NOTES

Do not install XtremeTrim® Window Flashing on horizontal applications where the exterior flange can catch water.



Illustration not to scale