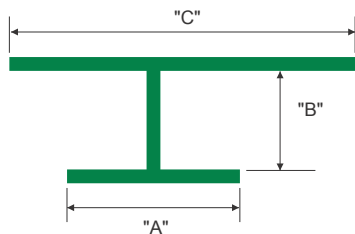
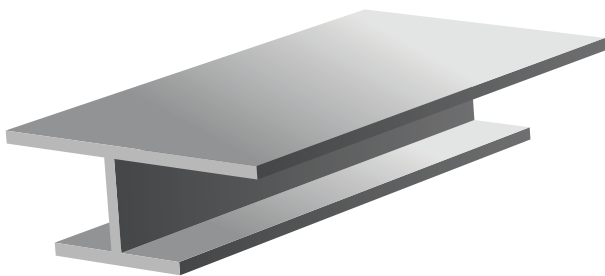


Soffit H-Mold



ITEM ID	"A"	"B"	"C"	SIDING/SOFFIT SIZE
XHM148	1/2"	9/32"	1"	1/4"
XHM5168	1/2"	11/32"	1"	5/16"

All parts are 8' Length unless otherwise indicated

DESIGN FEATURES

Designed to work as a system component with Tamlyn vinyl soffit vent products and most soffit panel materials. Covers the end seams of the soffit material and vents, providing a cleaner transition than simply butting the vents and panels end to end. XHM5168 can be used as a vertical panel joint cover in some low elevation applications.

MATERIAL

6063-T5 .040" ± .005 extruded aluminum alloy with proprietary coating that protects against harsh weather conditions and allows for paint adhesion.

FINISH

Unless specified all XtremeTrim® items are provided in primed finish. Also available in popular siding/soffit colors in standard face only color match or full coverage CoastalColorCoating™.

NOTE

Use of the XtremeTrim® H-Mold at vertical or horizontal siding joints is not recommended.

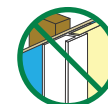


Illustration not to scale

