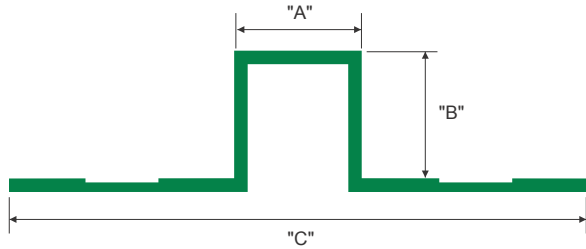
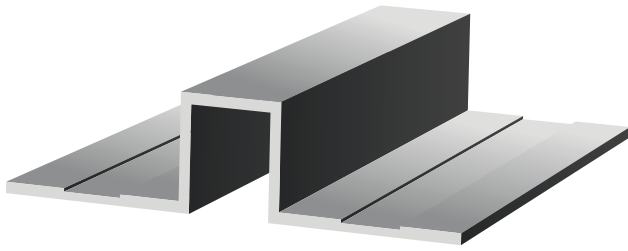
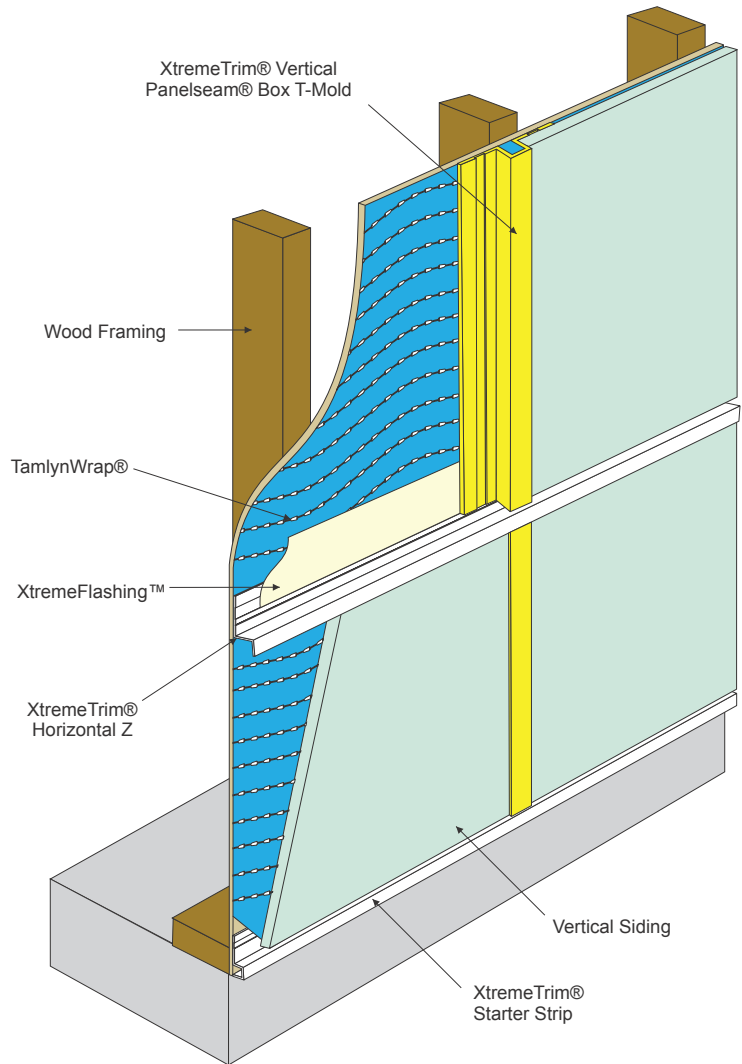
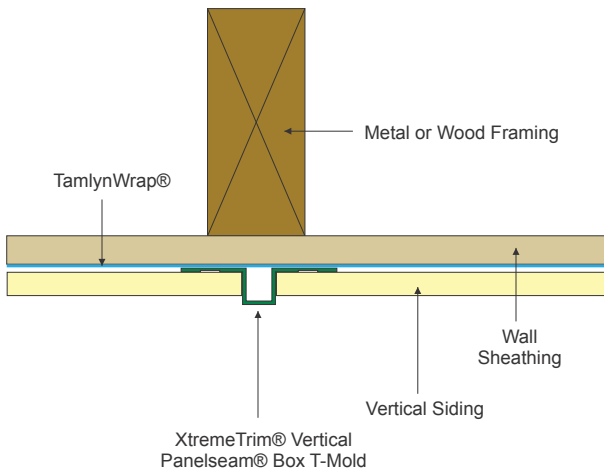


# Vertical Panelseam® Box T-Mold



ITEM ID	"A"	"B"	"C"	SIDING SIZE
TM28B	7/16"	7/16"	2"	5/16"

All parts are 8' Length unless otherwise indicated



## DESIGN FEATURES

XtremeTrim® Vertical Panelseam® Box T-Mold serves as a broad, distinct expansion joint between panels. Works with all panel profiles/ finishes up to 7/16" thick.

## MATERIAL

6063-T5 .045" ± .005 extruded aluminum alloy with proprietary coating that protects against harsh weather conditions and allows for paint adhesion.

## FINISH

Unless specified all XtremeTrim® items are provided in primed finish. Also available in popular siding/soffit colors in standard face only color match or full coverage CoastalColorCoating™. Clear Anodized is stocked and custom anodized is available (minimums apply).

## NOTE

Use of the XtremeTrim® Panelseam® Box T-Mold at horizontal joints is not recommended.

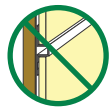


Illustration not to scale