

Vertical Siding H-Mold

DESIGN FEATURES

Designed to cover vertical joints in siding. Longer lasting and more effective than contractor grade caulk. Provides a smooth seam at joints.

MATERIAL

6063-T5 .050" ± .005 extruded aluminum alloy with proprietary coating that protects against harsh weather conditions and allows for paint adhesion.

FINISH

Unless specified all XtremeTrim® items are provided in primed finish. Also available in popular siding/soffit colors in standard face only color match or full coverage CoastalColorCoating™. Clear Anodized is stocked and custom anodized is available (minimums apply).

NOTE

Use of the XtremeTrim® Vertical Siding H-Mold at horizontal joints is not recommended.

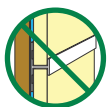
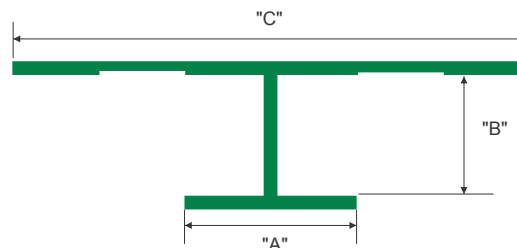
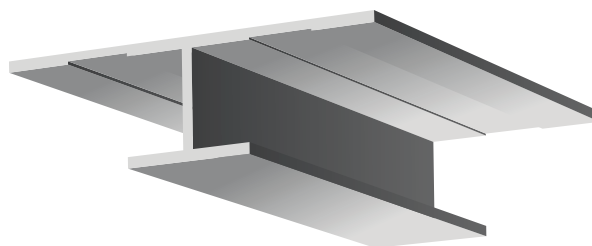
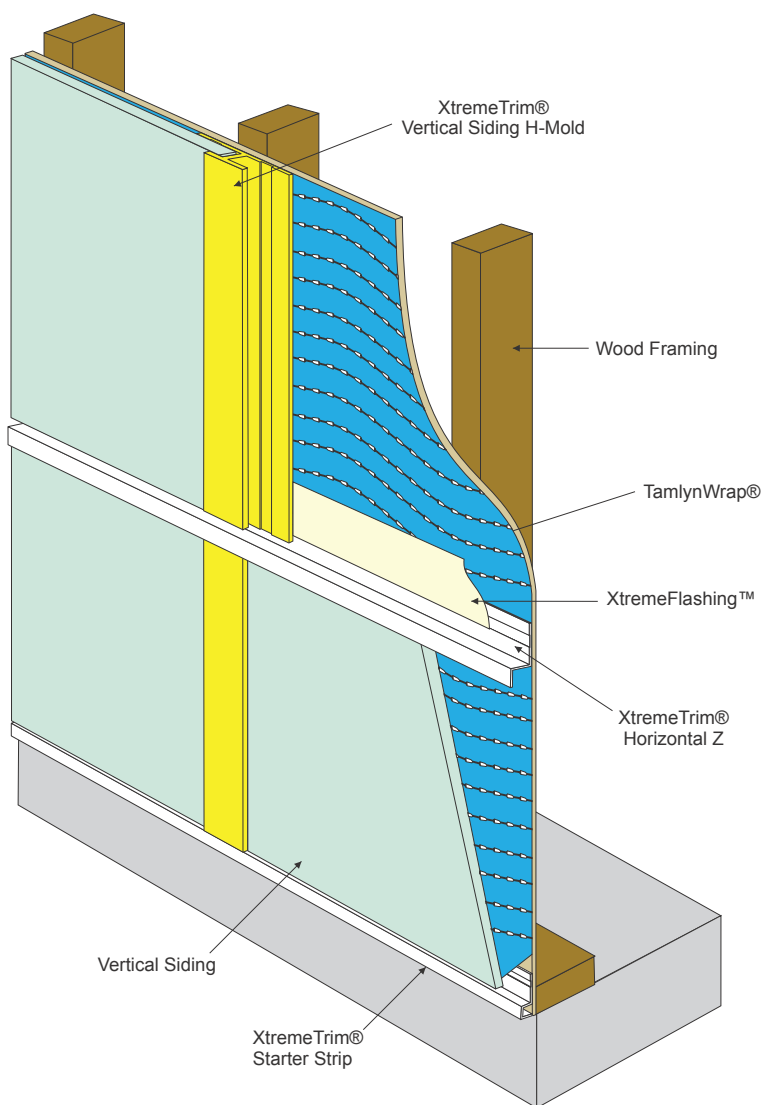


Illustration not to scale



ITEM ID	"A"	"B"	"C"	SIDING SIZE
SHM5168*	1/2"	3/8"	1-1/2"	5/16"
SHM51610	1/2"	3/8"	1-1/2"	5/16"
SHM71610	3/4"	15/32"	2"	7/16"
SHM588*	3/4"	5/8"	2-1/4"	5/8"
SHM5810	3/4"	5/8"	2-1/4"	5/8"
SHM3410	3/4"	3/4"	1-3/4"	3/4", 5/16" Lap
SHM110	1"	1"	2-1/2"	1"

All parts are 10' Length unless otherwise indicated - *8' Length

