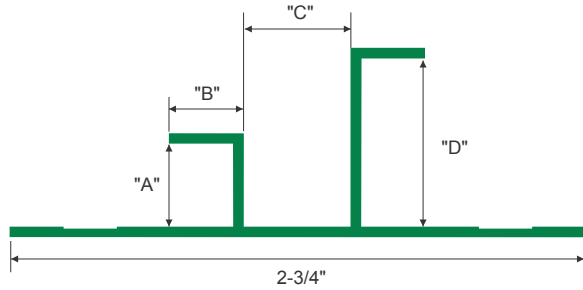
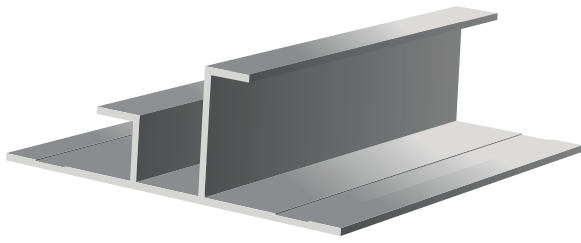
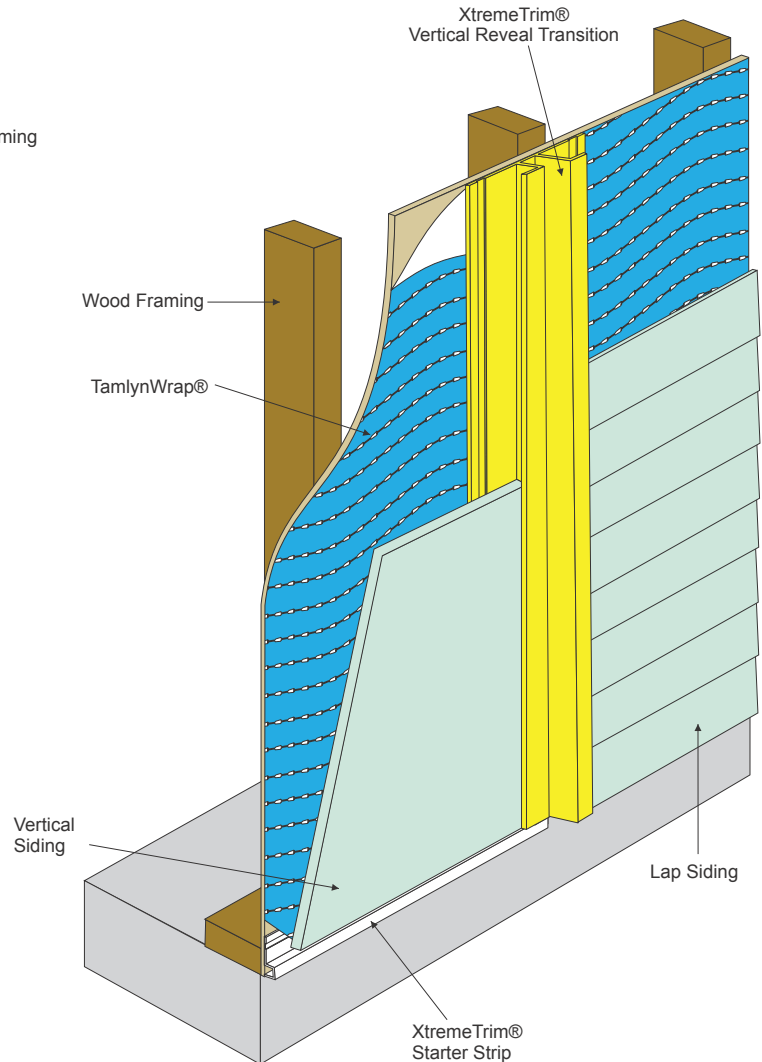
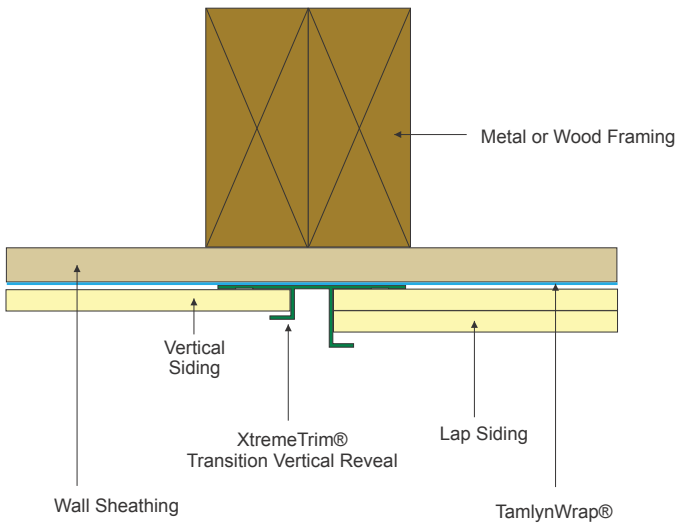


# Vertical Reveal - Transition



ITEM ID	"A"	"B"	"C"	"D"	SIDING SIZE
RVT51634	3/8"	3/8"	1/2"	3/4"	5/16" to 3/4", 5/16" Lap

All parts are 10' Length unless otherwise indicated



## DESIGN FEATURES

Designed to create a uniform, aesthetically consistent vertical reveal at transitions between panel and lap siding.

## MATERIAL

6063-T5 .050" ± .005, extruded aluminum alloy with proprietary coating that protects against harsh weather conditions and allows for paint adhesion.

## FINISH

Unless specified all XtremeTrim® items are provided in primed finish. Also available in popular siding/soffit colors in standard face only color match or full coverage CoastalColorCoating™. Clear Anodized is stocked and custom anodized is available (minimums apply).

## NOTE

Use of the XtremeTrim® Transition Vertical Reveal at horizontal joints is not recommended.



Illustration not to scale