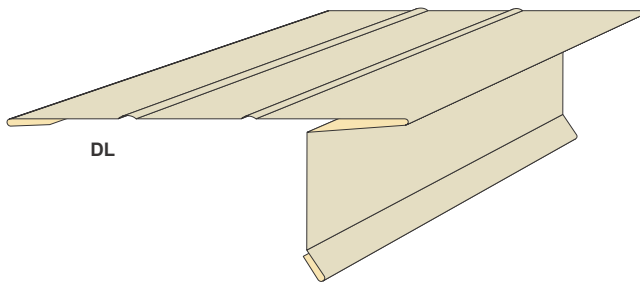
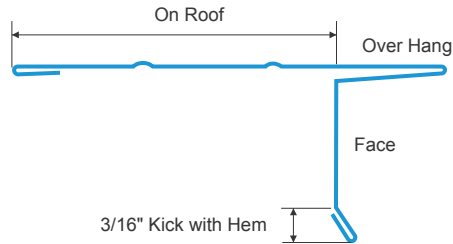


Overhang Roof Edge - Drip Edge



DL



ITEM ID	FACE	ON ROOF	GIRTH
DL1545	1-1/2"	1-5/8"	4-1/2"
DL1560	1-1/2"	3"	6"

DESIGN FEATURES

Deflects water away from fascia board. Overhang lip protects shingle edge at roof line.

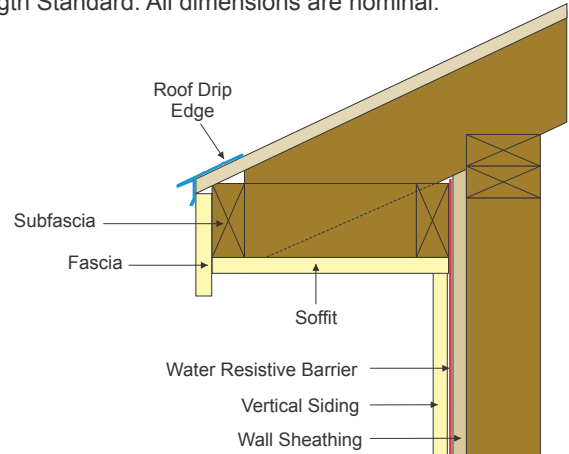
MATERIAL

Primed: .019" ± .003 Galvanized steel with proprietary coating that protects against harsh weather conditions and allows for paint adhesion.

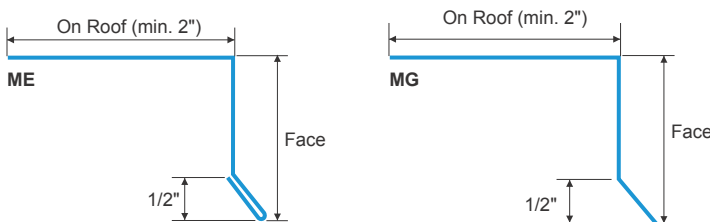
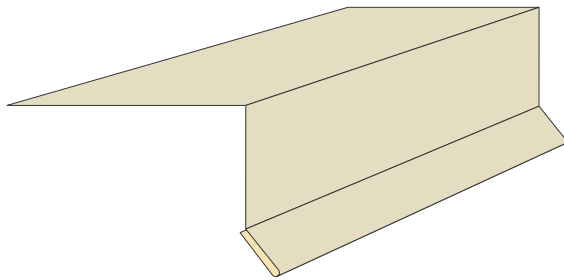
Color Matched: .019 ± .003 Aluminum sheet coated 2 sides with paint system that is specifically formulated for exterior applications.

Available in most popular Siding and Soffit colors. Specify color code using Color Palette on page 6.

10' Length Standard. All dimensions are nominal.



Angle Roof Edge



ITEM ID	FACE	ON ROOF	GIRTH
ME130	1"	2"	3"
ME240	2"	2"	4"
ME360	3"	3"	6"
MG130	1"	2"	3"
MG240	2"	2"	4"
MG360	3"	3"	6"

DESIGN FEATURES

Deflects water away from fascia board. Basic roof edge profile.

MATERIAL

Primed: .019" ± .003 Galvanized steel with proprietary coating that protects against harsh weather conditions and allows for paint adhesion.

Color Matched: .019 ± .003 Aluminum sheet coated 2 sides with paint system that is specifically formulated for exterior applications.

Available in most popular Siding and Soffit colors. Specify color code using Color Palette on page 6.

8' Length Standard. All dimensions are nominal.

